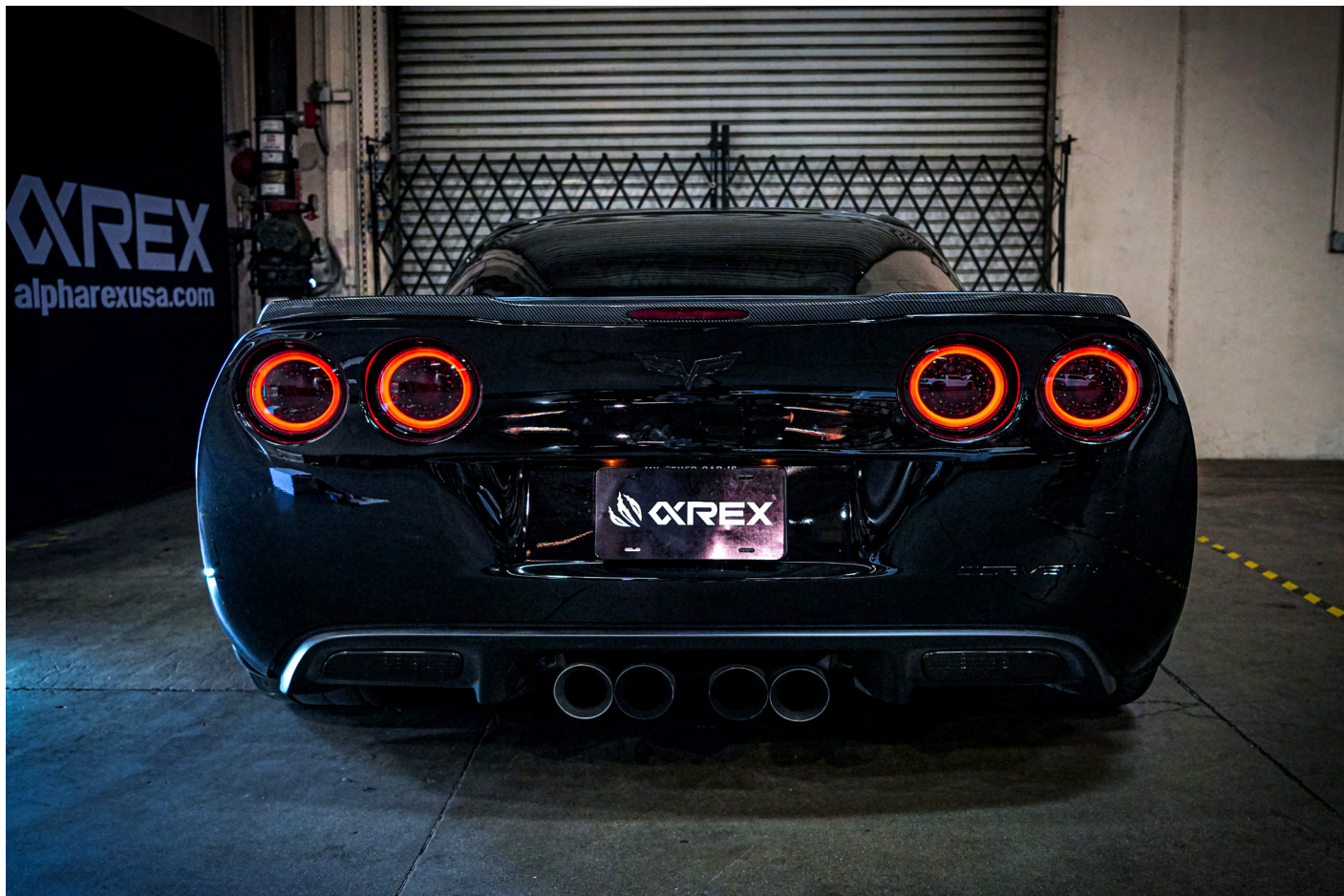




## Installation Guide for 05-13 Chevrolet Corvette PRO-Series LED Tail lights

ALPHAREX specializes in designing and producing superior and uniquely stylish aftermarket automotive performance lighting with unrivalled innovative technology. This installation guide takes you through the step-by-step process of installing your new **ALPHAREX TAIL LIGHTS** for your 2005-13 Chevrolet Corvette

**DO NOT USE DIELECTRIC GREASE!**



### Table of Contents



#### PART I REMOVE TAIL LIGHTS

- **INSTALLATION TOOLS**
- **STEP 1.** Remove tail lights
- **STEP 2.** Transferring the light sockets
- **STEP 3.** Install the resistors
- **STEP 4.** Complete Installation

*Disclaimer: This installation article is a tutorial guide. By reading this article, you agree it is for reference only and AlphaRex USA and its distributors make no guarantee on the finished results. Under no circumstances whatsoever shall AlphaRex USA nor its distributors be liable for any damage, misuse or personal injuries. If you do not fully understand the installation procedure, it is highly recommended that you seek help from professional mechanics to do the installation.*

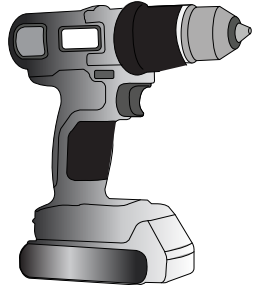
## PART I REMOVE TAIL LIGHTS

### INSTALLATION TOOLS

PREPARE THESE TOOLS FOR INSTALLATION



Phillips  
Screwdriver



Power Tool



Plastic  
Panel  
Popper



Pick Tool

**NOTE:** Whenever using a power tool, please make sure do not overtighten the screws.

Whenever working on your vehicle, always make sure your vehicle is parked with the ignition off.



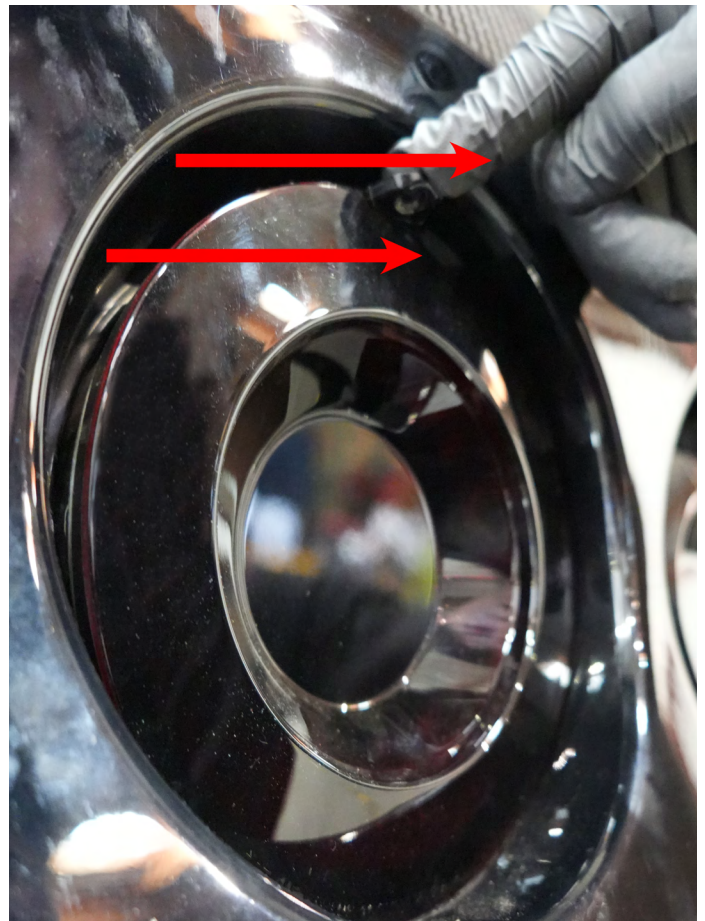
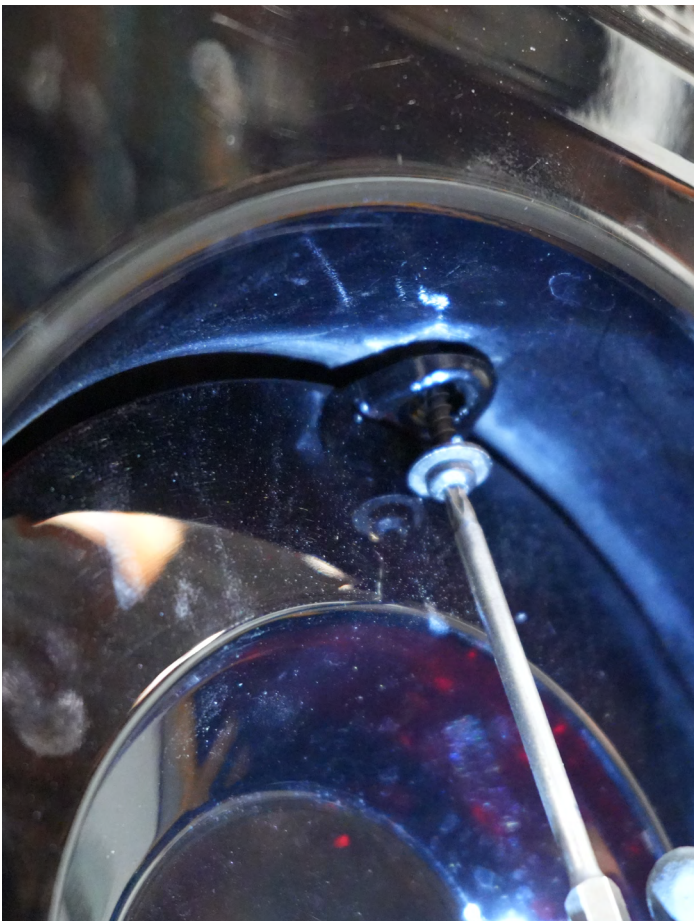


## STEP 1. REMOVE TAIL LIGHTS

Remove the screws securing each of the four tail light assemblies.



Use a panel popper to assist in removing the tail light assembly.





Gently remove the tail lights by pulling outward.





Unplug the connection for each tail light assembly.



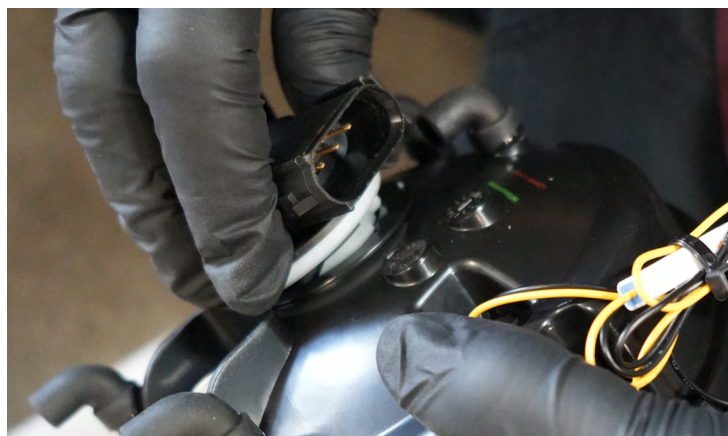
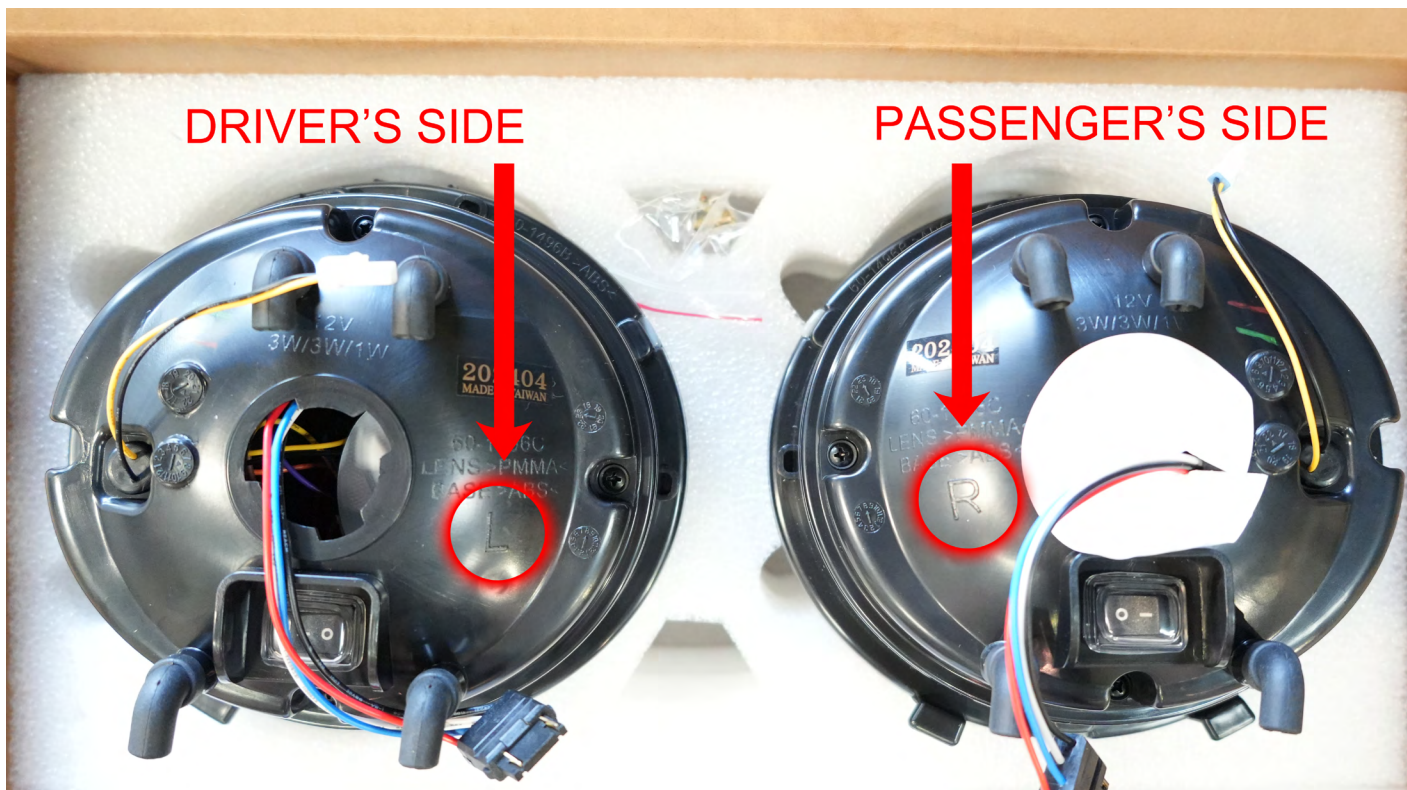
After removing all four tail lights (two on the left and two on the right), twist and open the light sockets from the assemblies and begin transferring the light sockets into the new ALPHAREX tail lights.





## STEP 2. TRANSFERRING THE LIGHT SOCKETS

First, remove the light bulbs from each of the four light sockets and install them into the new ALPHAREX tail lights. Make sure to plug the connectors into the sockets, **DO NOT USE DIELECTRIC GREASE!** and install the two LEFT sockets (driver's side) into the LEFT ALPHAREX assembly and the two RIGHT sockets (passenger's side) into the RIGHT ALPHAREX assembly. Twist the sockets to secure them tightly into the light assemblies to avoid any dust or moisture build-up.

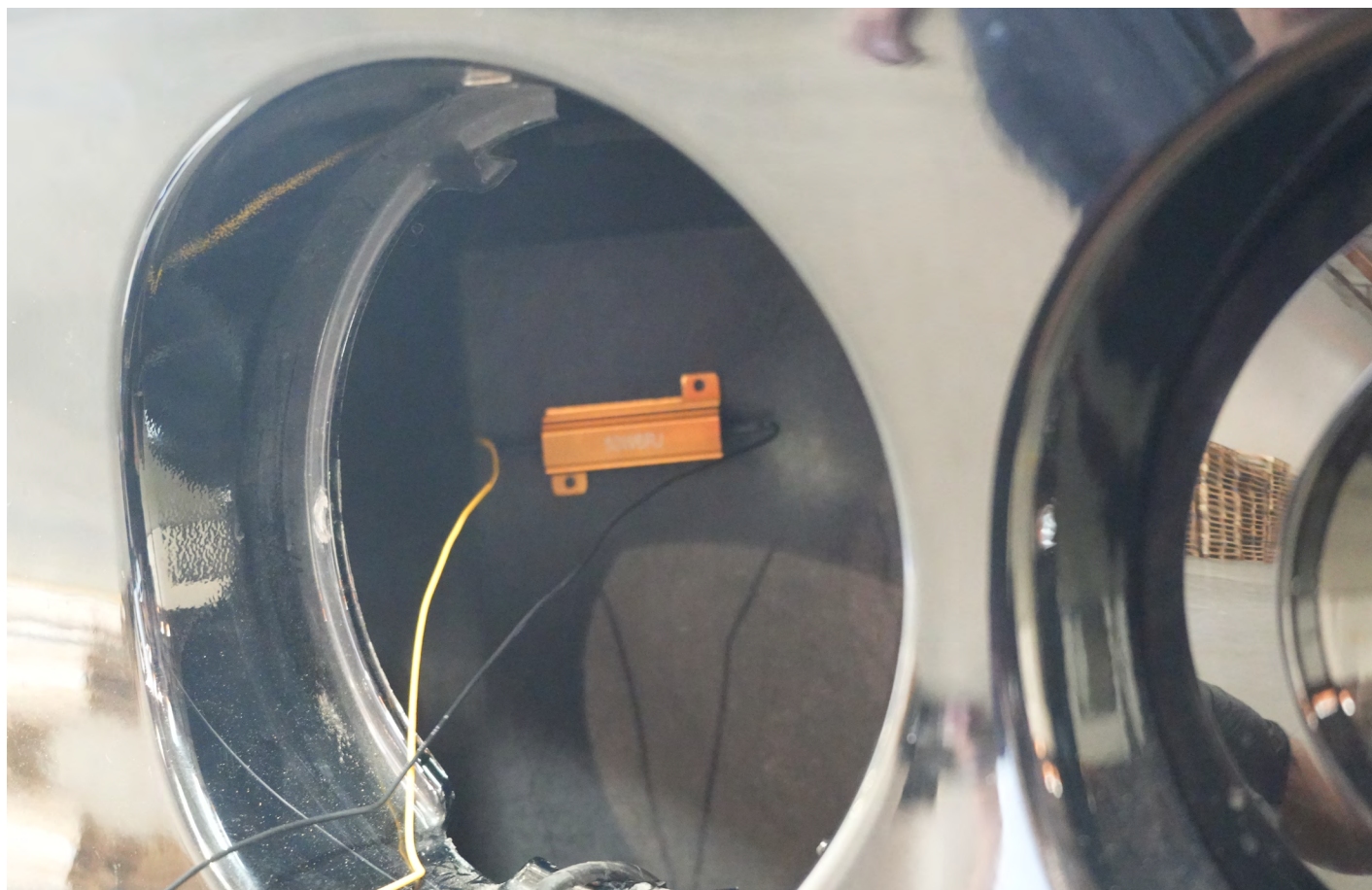




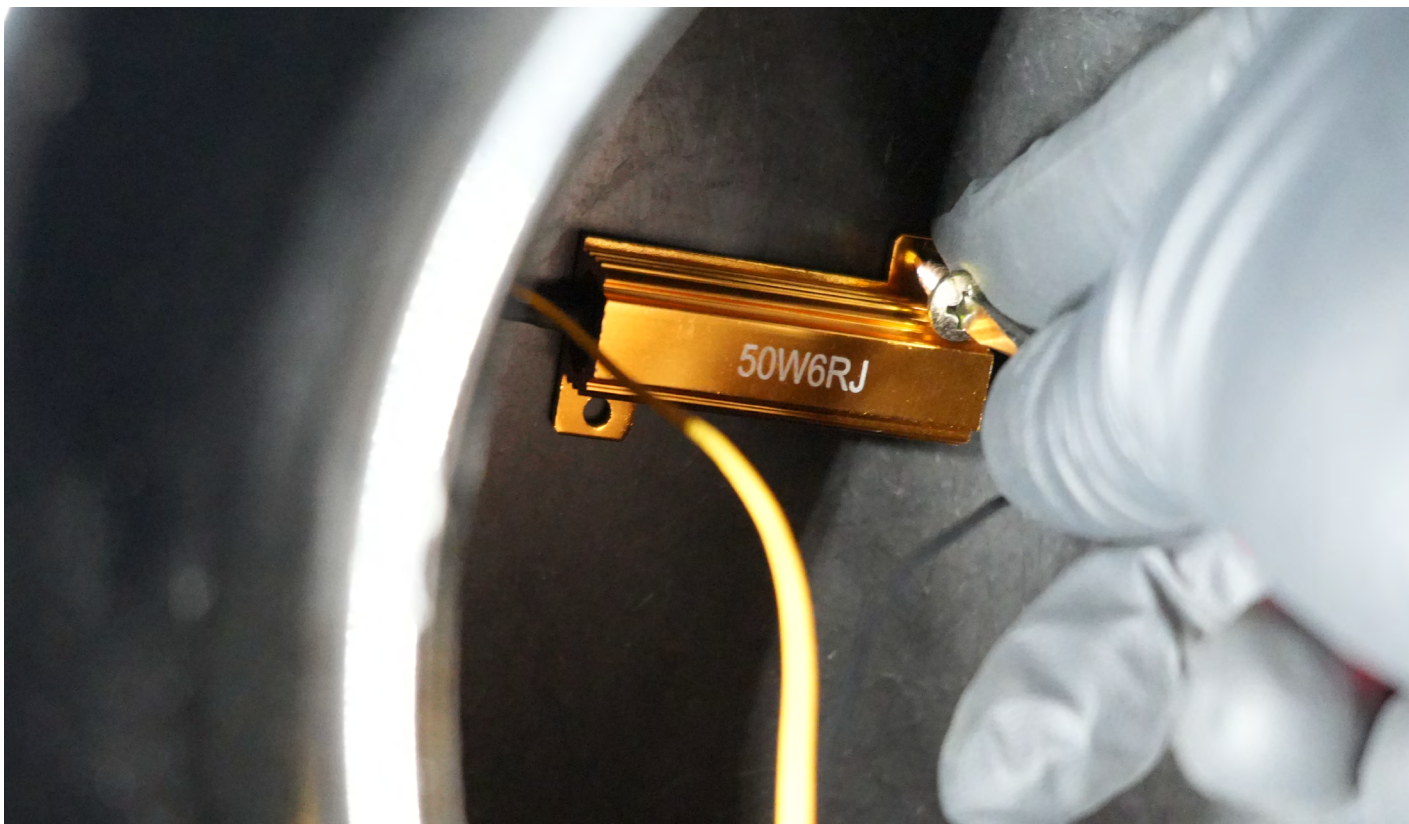
### STEP 3. INSTALL THE RESISTORS

In the package, you should find four resistors included for the new ALPHAREX tail lights. Each resistor should be installed on the inner side of the rear trunk space panel (usually made of fiberglass) and secured with the included screws.

**CAUTION: Resistors can become very hot during operation, which may cause danger or melting if they come into contact with non-heat-resistant materials.**







Plug the resistor into each corresponding tail light assembly and connect the tail light connector to the assembly. The tail lights are now ready to be installed into the vehicle.

**DO NOT USE DIELECTRIC GREASE!**







Secure the tail light with the screw and follow the same steps for the other tail lights to complete the installation.

**NOTE:** *Whenever using a power wrench, please make sure do not overtighten the screws.*





## STEP 4. COMPLETE INSTALLATION

Congratulations! You have completed the installation for ALPHAREX 05-13 Chevrolet Corvette PRO-Series LED tail lights.

